

Year 8
Art & Design



YEAR 8 POP



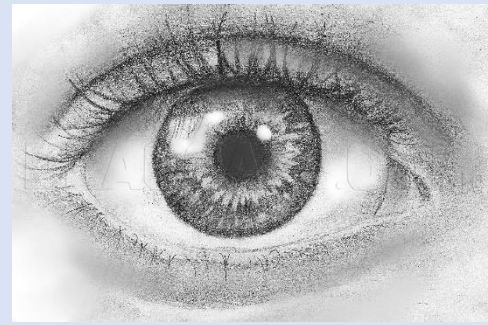
Tasks: Skills : Copying
tasks:
 Shading /tone work-
 Warhol can studies/
 sweet wrapper.
 Claes Oldenburg 'dropped
 Cone' study
 Colour Crosshatch
 /hatched line –Andy
 Warhol/ Alberto
 Giacometti portrait.

Tasks: Knowledge and understanding. Research on artists

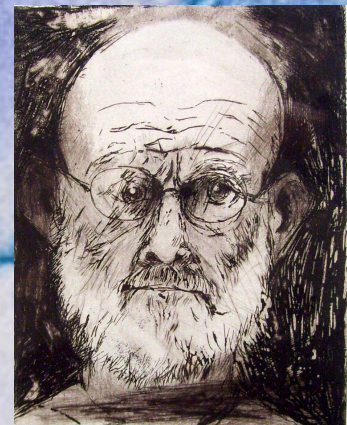
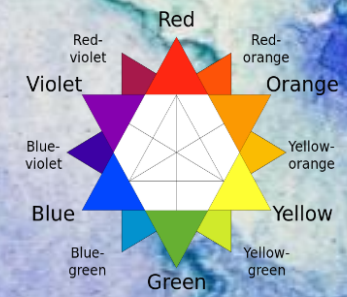
Produce a double page spread in your sketchbook or an A4 word/publisher document.

- Andy Warhol
- Claes Oldenburg
- Alberto Giacometti
- German Expressionism - Portraiture

- Pictures
- Facts
- Dates
- Size/scale
- Materials /media used
- Link with key words
- Question /opinions
- The most important bit of the art work?



YEAR 8 PORTRAITURE



KEY WORDS



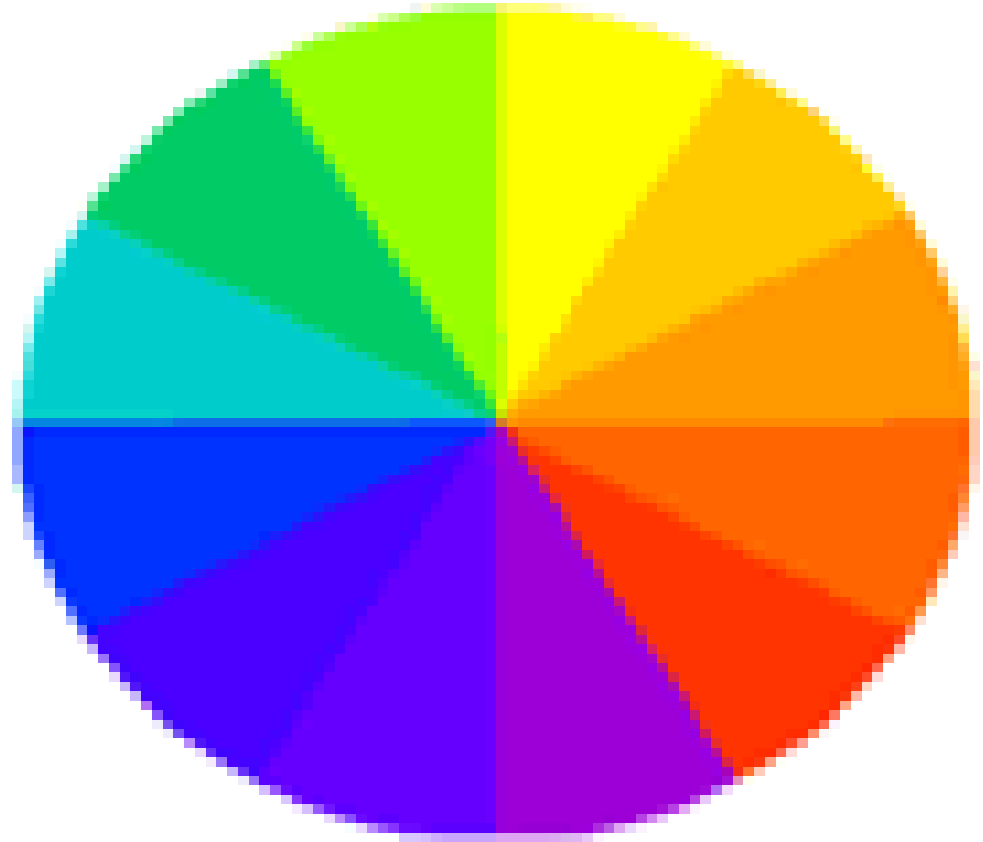
| | |
|--------------|---|
| COMPOSITION | The term composition means "putting together" |
| DEVELOP | Selecting ideas, visual elements, compositions and techniques from this initial work and using them in new ways |
| JUXAPOSITION | two things being seen or placed close together with contrasting effect |
| TYPOGRAPHY | the art or procedure of arranging type |
| SCREEN PRINT | force ink on to a surface through a prepared screen of fine material so as to create a picture or pattern |
| CONSUMERISM | the protection or promotion of the interests of consumers |
| MANUFACTURE | make (something) on a large scale using machinery |



Task: Knowledge and understanding
 Learn colour theory rules complementary colours and Tertiary colours

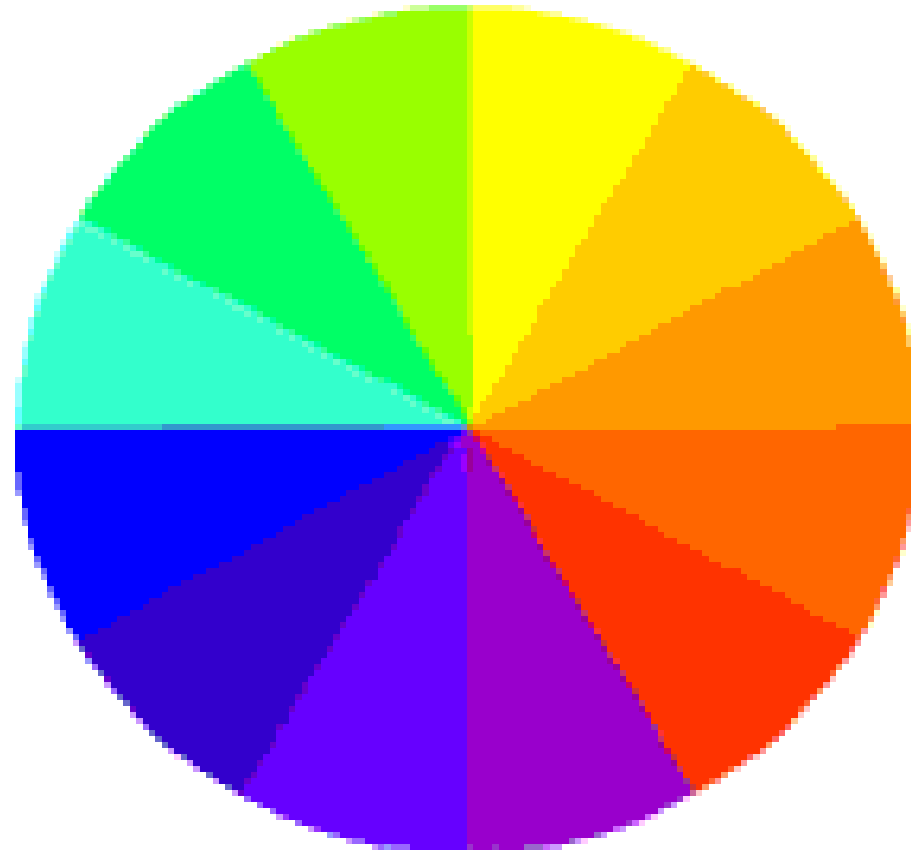
Knowledge and understanding: Complementary Colours

- Complementary colours are opposite on the colour wheel.
- Blue & Orange.
- Purple & Yellow.
- Red & Green.



Knowledge and understanding: Tertiary Colours.

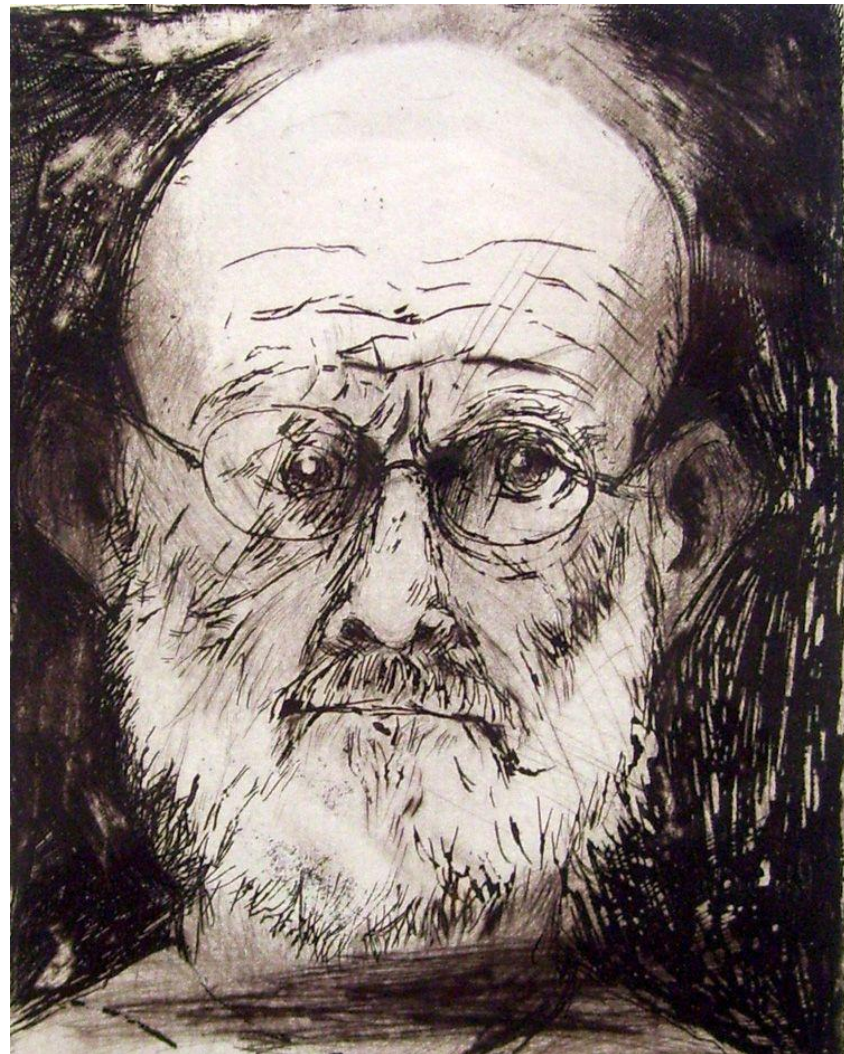
- These are : 1 primary colour + 1 secondary colour.
- Yellow & Orange.
- Red & Orange.
- Blue & Green.
- Yellow & Green.
- They are placed next to each other on the colour wheel.



Task: Colour
Andy Warhol/Chuck Close



Expressive Portraits: Jim Dine/ German Expressionism/ Alberto Giacometti
Formal Element - LINE



Task: Copy a Jim Dine heart. Use
colouring crayons, pens.



Jim Dine
monotypes et gravures



Andy Warhol THE WARHOL COLLECTION



Task: Copy the Andy Warhol can and the Cola can. Use pencil, pencil crayons.



Andy Warhol THE WARHOL COLLECTION



Roy Lichtenstein . Portrait .
'Oh Jeff...' 1964 oil and magna on canvas painting

Cover lesson: Key Words:
LINE . SHAPE. PROPORTION.

On the A5 paper provided make a copy of artist Roy Lichtenstein's comic strip 'Oh Jeff',

Use a simple grid method to help you to draft out the composition accurately. Divide into quarters- 4 equal parts.

Sketch out the outline of the portrait lightly with a pencil, and make sure everything is in the right place before you add any shading or colour.

It is the ACCURACY of the drawing/proportions that is important in this task

TAKE CARE WITH YOUR WORK!!



Andy Warhol : Portrait
'Marilyn Monroe' 1962 painting

Cover lesson: Key Words:
LINE . SHAPE. PROPORTION.

On the A5 paper provided make a copy of Andy Warhol's 'Marylyn Monroe'.

Use a simple grid method to help you to draft out the composition accurately. Divide into quarters- 4 equal parts.

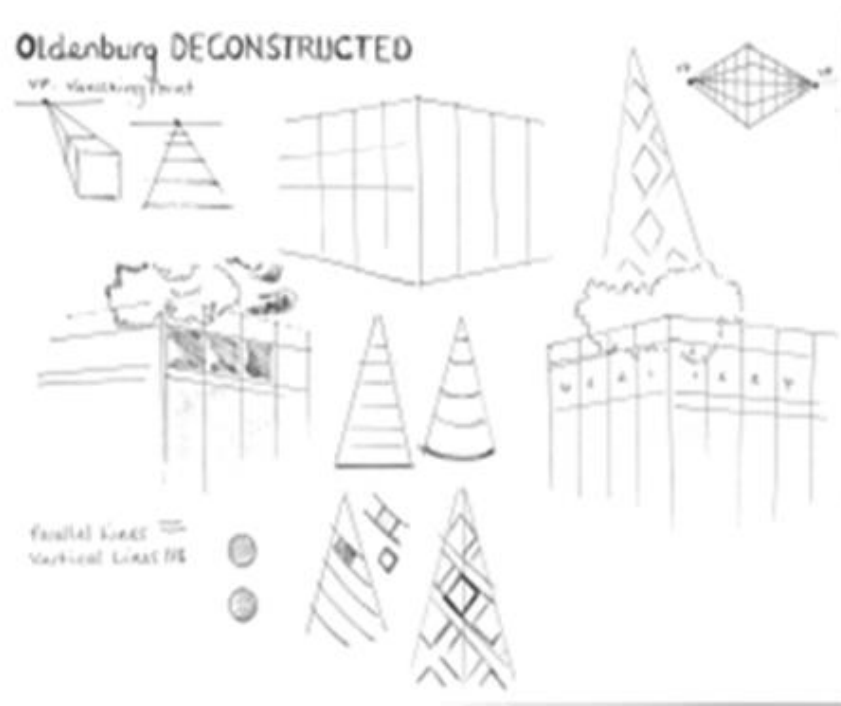
Sketch out the outline of the portrait lightly with a pencil, and make sure everything is in the right place before you add any shading or colour.

It is the ACCURACY of the drawing/proportions that is important in this task

TAKE CARE WITH YOUR WORK!!



Claes Oldenburg : Dropped Cone study. Print out in black and white. Make a pencil study .



Task: Skills . Observational drawing.
crush a sweet or savoury snack
wrapper. Make a pencil study of the
object you have crushed. If you have no
access to any wrappers enlarge these
examples. Print them out and work
from them.



Using this Warhol example of TYPOGRAPHY as inspiration produce your own name square. Colours and style of lettering is your choice.

