

# KNOWLEDGE ORGANISER: EVALUATION

## HOW TO USE: POINTS

1. Fill in the boxes carefully, using all of your class materials, textbooks and the internet to help you.
2. Get others to test you on the key concepts by prompting you with the box titles, and you telling them the information.
3. Use as a starting point for more detailed mind-maps.
4. Turn in to flashcards.

**THEORIES  
OF  
CRIMINALITY  
Y**

# AC2.1 BIOLOGICAL THEORIES OF CRIMINALITY

## Physiological theories

Lombroso: strengths/limitations

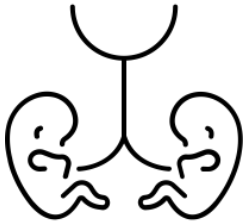
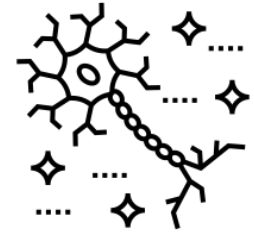
Sheldon: strengths/limitations

## Genetic theories

Jacobs' XYY theory: strengths/limitations

Twin studies: strengths/limitations

Adoption studies: strengths/limitations



## BASIC ASSUMPTIONS OF BIOLOGICAL THEORIES:

- ★ CRIME IS CAUSED BY PHYSIOLOGICAL, GENETIC OR NEURAL ABNORMALITIES
- ★ BIOLOGICAL DEFECTS CAN BE INNATE (FROM BIRTH) OR THROUGH INJURY, AND INDIVIDUALS

# AC2.1 BIOLOGICAL THEORIES OF CRIMINALITY

## Neural theories

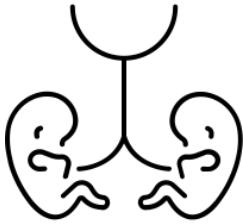
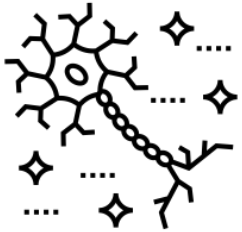
Strengths:

Limitations:

## Biochemical theories

Strengths:

Limitations:



## BASIC ASSUMPTIONS OF BIOLOGICAL THEORIES:

- ★ CRIME IS CAUSED BY PHYSIOLOGICAL, GENETIC OR NEURAL ABNORMALITIES
- ★ BIOLOGICAL DEFECTS CAN BE INNATE (FROM BIRTH) OR THROUGH INJURY, AND INDIVIDUALS HAVE LITTLE CONTROL OVER THEM

# AC2.2 INDIVIDUALISTIC THEORIES OF CRIMINALITY

## Learning theories

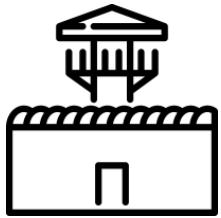
Social learning theory: strengths/limitations

Differential association theory: strengths/limitations

## Eysenck's personality theory

Strengths:

Limitations:



## BASIC ASSUMPTIONS OF INDIVIDUALISTIC THEORIES

- ★ CRIME IS CAUSED BY INDIVIDUAL DIFFERENCES BASED ON PERSONALITY TYPES OR EXPERIENCES THAT PEOPLE HAVE.

# AC2.2 INDIVIDUALISTIC THEORIES OF CRIMINALITY

## Cognitive theories

Criminal personality theory: strengths/limitations

Kohlberg's moral reasoning: strengths/limitations

## Psychodynamic theories

Freud: strengths/limitations

Bowlby: strengths/limitations



## BASIC ASSUMPTIONS OF INDIVIDUALISTIC THEORIES

- ★ CRIME IS CAUSED BY INDIVIDUAL DIFFERENCES BASED ON PERSONALITY TYPES OR EXPERIENCES THAT PEOPLE HAVE.

# AC2.3 SOCIOLOGICAL THEORIES OF CRIMINALITY

## Functionalist theories

Durkheim: strengths/limitations

Merton: strengths/limitations

## Marxist theories

Strengths:

Limitations:

## Labelling theory

Strengths:

Limitations:

## BASIC ASSUMPTIONS OF SOCIOLOGICAL THEORIES

- ★ CRIME IS CAUSED BY STRUCTURAL FACTORS SUCH AS POVERTY, CAPITALISM AND SOCIAL INEQUALITY

# AC2.3 SOCIOLOGICAL THEORIES OF CRIMINALITY

## Left realism

Strengths:

Limitations:

## Right realism

Strengths:

Limitations:

## Subcultural theory

Strengths:

Limitations:

## BASIC ASSUMPTIONS OF SOCIOLOGICAL THEORIES

- ★ CRIME IS CAUSED BY STRUCTURAL FACTORS SUCH AS POVERTY, CAPITALISM AND SOCIAL INEQUALITY



**CRIME**

**PREVENTION**

# BIOLOGICAL BASED CRIME PREVENTION

## Biochemical

Strengths:

Limitations:

## Surgical

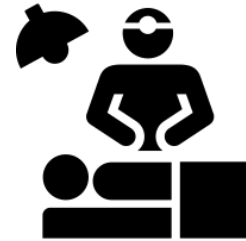
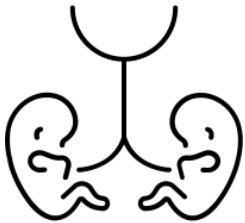
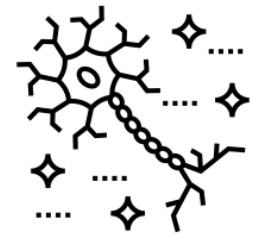
Strengths:

Limitations:

## Genetic

Strengths:

Limitations:



**AC 4.1 ASSESS THE USE OF CRIMINOLOGICAL THEORIES IN INFORMING POLICY DEVELOPMENT**

# INDIVIDUALISTIC BASED CRIME PREVENTION

Token economy (behavioural modification)

Strengths:

Limitations:

Psychoanalysis

Strengths:

Limitations:

Aversion therapy

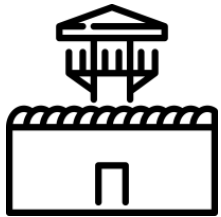
Strengths:

Limitations:

Cognitive behavioural therapy

Strengths:

Limitations:



# SOCIOLOGICAL BASED CRIME PREVENTION

## Penal populism and imprisonment

Strengths:

Limitations:

## Situational crime prevention

Strengths:

Limitations:

## Environmental crime prevention

Strengths:

Limitations:

## Restorative justice

Strengths:

Limitations:

AC 4.1 ASSESS THE USE OF CRIMINOLOGICAL THEORIES IN

INFORMING POLICY DEVELOPMENT

**CAMPAIGNS**

# CAMPAIGNS FOR CHANGE IN LAWS AND POLICIES

## Newspaper campaigns

Strengths:

Limitations:

## Individual campaigns

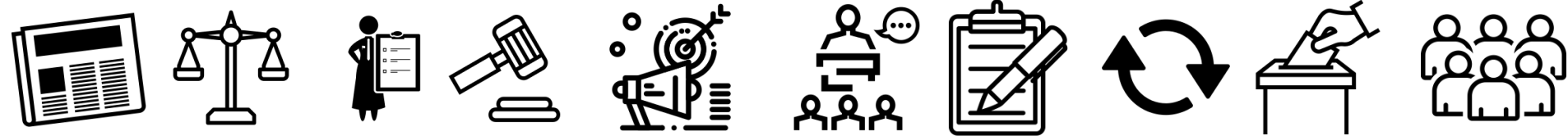
Strengths:

Limitations:

## Pressure group campaigns

Strengths:

Limitations:



**AC4.3 DISCUSS HOW CAMPAIGNS AFFECT**