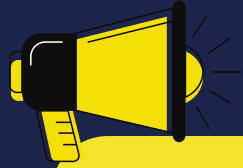
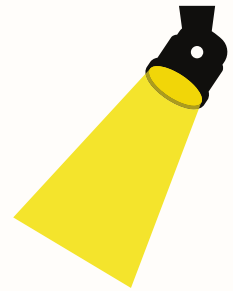


WBSpotlight

w/e 6th February 2026



Important information

Page 2&3 What's new

Page 4&5 Parent & Student info

Page 6&7 Extra Curricular

Page 8&9 Amazing Us

Page 10 Matilda!

Page 11 What's on at The Edge

Page 12 Careers and

Destinations

Page 13 Community, Advice &
Guidance

School calendar



9th February -
Munich/Berlin meeting
5.30pm

16-20th February - Half
Term

28th February - Y9
Reports Released

2nd March - Y9 PCE

What a week it's been!

Dear WBS families,

💖 Matilda Rehearsals

It's wonderful to hear the show is coming together so well. The excitement for next week is palpable! And absolutely — huge recognition to Mrs Leason. The commitment, the evenings, the energy she's poured into this... it really shows when a production starts to shine.

🇬🇧 Trust Standards Review

Getting strong praise for improvements in teaching, learning, and curriculum is no small achievement. Even with areas to keep developing, that kind of feedback proves the direction is right and the effort is being noticed.

🌈 Assemblies on Diversity

What an essential theme — and it sounds like your students have risen to it with the maturity and curiosity you'd hope for. Those discussions can shape a culture in such powerful ways.

🚗 Alumni Inspiration

A big shoutout to Nikita Kang! Bringing alumni back to inspire current students is always impactful, and hearing about degree apprenticeships firsthand must have been so motivating for Year 10. And yes... being lent a Jaguar Land Rover definitely adds a bit of "wow!"

Mrs Mincher, Deputy Head.



What's new!

Year 9 Preferences 2026-8

As Year 9 students begin choosing their GCSE subjects for 2026–28, we are supporting them to make informed, balanced decisions about their educational pathways. Below is an overview of the process and key information for families.

Students will choose their GCSE pathway: Triple Science, Core, or Vocational each offering a different balance of academic and practical learning.

All students study English Language & Literature, Maths, Science (Double or Triple), and PE.

Students then select additional subjects. To ensure a broad curriculum, they should pick at least one from: Triple Science, Computer Science, French, Spanish, Geography or History. Modern languages are encouraged as they support future study and career opportunities.

There are also opportunities for Enrichment, Alternative Provision (e.g., Construction, Creative Crafts, Hair & Beauty), and optional qualifications such as HPQ (Year 10) and the ILM Young Leaders Award (Year 11).

The presentation and the subject-specific leaflets are now available on the school website and can be accessed here:

[William Brookes School Y9 Preferences](#)

If you have any questions about the process, please don't hesitate to get in touch



Key Dates

2 Feb 2026 — Launch (assembly + parent event)

W/C 9 & 23 Feb — Subject-specific assemblies

28 Feb — Reports sent home

2 Mar — Parents' Consultation Evening

3 Mar — Deadline for pathway choice

6 Mar — Online form details sent home

13 Mar (15:30) — Online form closes





What's new!

We're excited to announce that WBS is now part of Your School Lottery!

This is a simple, fun way for our families, friends, and wider community to support the school — while having the chance to win fantastic prizes every week! 🎉👉

By taking part, you'll be helping us raise valuable funds that go directly back into improving opportunities for our students.

📋 How it works:

Tickets cost just £1 a week

There's a guaranteed weekly WBS prize winner

You're also entered into the national £25,000 jackpot draw
Plus, special Super Draws throughout the year (including big cash and gift card prizes!)

👉 Click here to play and support William Brookes School:
<https://www.yourschoollottery.co.uk/.../william-brookes...>

Every ticket helps. Every supporter makes a difference.

Thank you for backing our school community!

YOUR SCHOOL LOTTERY

WE'VE LAUNCHED A LOTTERY

Buy your tickets now to help our fundraising

- Tickets cost just £1
- All profits go to our school
- Local cash prizes every week
- Chance to win the £25,000 jackpot!

To start supporting, visit
[yourschoollottery.co.uk](https://www.yourschoollottery.co.uk)
and search for William Brookes



Student & Parent information



PSHE & Assembly Overview Spring Term - February to Easter

At William Brookes School, our PSHE curriculum this half term focuses on helping students develop healthy habits, positive relationships, and a strong understanding of themselves and others. Here's what each year group will be exploring...



PSHE LEARNING THIS HALF TERM

Year 7 – Understanding Puberty

Students will learn about the emotional and physical changes of puberty, menstrual wellbeing, changing relationships, and awareness of FGM.

Year 8 – Relationships & Gender Identity

This unit explores the difference between sex and gender, gender identity, sexism, feminism, masculinity, and the role of society and media in shaping our views.

Year 9 – Substance Awareness

Students will look at drug laws, the risks of smoking and vaping, alcohol awareness, and how peer pressure can influence decision-making.

Year 10 – External Influences

A focus on media, social media, family and cultural expectations, and how advertising affects the choices young people make.

Year 11 – Revision Skills

Practical revision strategies and guided time to help students prepare effectively for their upcoming exams.

ASSEMBLY THEMES

Across the term, assemblies will support whole-school values and encourage students to reflect, celebrate, and grow.

• Children's Mental Health Week

Exploring wellbeing, resilience, self-care, and how to seek help and support friends.

• International Women's Day

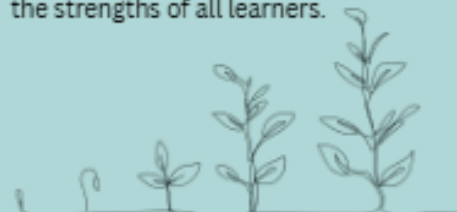
Celebrating women's achievements, challenging stereotypes, and showcasing inspiring female role models.

• Careers: "Who Do I Want to Be?"

Helping students reflect on their strengths and aspirations, and learn about different pathways including academic routes, apprenticeships, and entrepreneurship.


• Neurodiversity Celebration Week

Promoting understanding of autism, ADHD, dyslexia, dyspraxia, and other neurodivergences, while celebrating the strengths of all learners.





Student & Parent information


 **WILLIAM BROOKES SCHOOL**


ATTENDANCE MATTERS

ATTENDANCE affects your **FUTURE**, so make sure it is **GREAT** ✓

★ **WHAT DO YOUR ATTENDANCE FIGURES ACTUALLY MEAN?** ★

95%	=	40 LESSONS MISSED EACH YEAR 8 days in total or 1 week and 3 days
90%	=	80 LESSONS MISSED EACH YEAR 16 days in total or 3 weeks and 1 day
85%	=	120 LESSONS MISSED EACH YEAR 24 days in total or 4 weeks and 4 days
80%	=	160 LESSONS MISSED EACH YEAR 32 days in total or 6 weeks and 2 days

★ **BE SMART BE THERE!** ★ 
Percentages based on 190 academic days

 Did you know that **17 days missed per year** (which equates to roughly **91% attendance**) can result in a pupil dropping a full GCSE grade in all subjects. ★

Extra Curricular Opportunities

Channel 4's The Dog House is looking for local families to offer a loving home to a rescue dog and share their reasons why on the show! If you're interested, find out more here:

<https://c4thedoghousetakepart.co.uk> or email thedoghouse@fivemilefilms.co.uk

LOOKING FOR A DOG?

ADOPT A RESCUE DOG
ON CHANNEL 4'S
the Dog House



APPLY HERE



[C4THEDOGHOUSETAKEPART.CO.UK](https://c4thedoghousetakepart.co.uk)

CALLING ALL

BUDDING POETS!

Time to put on your creative caps and enter the Live Arts Festival!

An opportunity to read your own poetry, about your favourite things

Poetry writing for performance

Saturday 14th March 2026
The Edge Live Arts Centre



For more information, visit our website
<https://wenlock-olympian-society.org.uk/wenlock-olympian-society-arts/>



Wenlock Olympian Games Live Arts Festival



A chance for young people of all abilities to perform in a supportive and friendly environment

Music competitions
for Primary (Years 1 - 6)
and Senior (Years 7-13)

- Singing Solo
- Singing Solo - Musical theatre
- Instrumental solos:
 - Novice All Instruments
 - Woodwind
 - Brass
 - Strings
 - Piano
 - Percussion
- Duets and Trios:
 - Singing
 - Singing - Musical Theatre
 - Instrumental
- Singing Group (Choir)
- Instrumental Group



Speech and Drama
competitions for
Primary and Secondary

- Choral speaking (primary)
- Verse Speaking
- Reading for Performance
- Creative Poetry Writing for Performance
- Acting (solo)
- Acting (duologue)



Online entry forms, further details and contact details:
<https://wenlock-olympian-society.org.uk/wenlock-olympian-society-arts/>

At the Edge Arts Centre, Much Wenlock,
Saturday 14th, Saturday 21st & Sunday 22nd March 2026

Extra Curricular Opportunities

BEHIND THE SCENES RACEDAY

WEDNESDAY 18 FEBRUARY 2026

FEBRUARY HALF TERM FUN FOR ALL OF THE FAMILY, sponsored by Suzuki ATV and Farm & Garden Machinery.

KIDS GO FREE!

Following the huge success of last year's event, we are pleased to be running our Behind The Scenes Day for the second year!

Due to the extremely positive feedback from schools, families and young people who attended previously, we are excited to once again open our doors and offer an engaging, educational day behind the scenes of a live raceday here at Ludlow Racecourse.

Behind The Scenes Day has been designed to give everyone, including families and children a unique insight into the world of horse racing, while enjoying a fun, inclusive day out in a real sporting environment.

Students will have the opportunity to explore careers, animal welfare, teamwork and sporting operations through a range of hands-on experiences.

Activities on the day will include:

- A guided course walk
- Weighing room tour
- "Down at the Start" experience
- Jockey demonstrations and trainer talks
- Equiciser fun and hobby horse jumping
- Autism in Racing sensory room

We are proud to be partnering with Racing to School and Autism in Racing to ensure the day is welcoming, educational and accessible for all.

About Suzuki ATV –

For over 40 years, Suzuki has been engineering ATVs that combine innovation with hard-working reliability. Built to perform day in, day out, KingQuad models offer versatile traction, simple controls and confident manoeuvrability to take the strain out of tough jobs. Every Suzuki ATV undergoes rigorous testing, from detailed engine and chassis inspections to full ride and performance checks, before further PDI and track testing by authorised UK dealers. With fully independent suspension introduced as early as 1991 and intuitive 4WD controls, Suzuki ATVs are designed to go further, in comfort and control.

About Farm & Garden Machinery –

Farm and Garden Machinery (Bridgnorth) Ltd is a leading UK dealer for ATVs, quad bikes and UTVs, backed by over 25 years of industry experience. Specialising in sales, servicing and parts, the team are main dealers for Suzuki ATV and Polaris ATV and UTV, while also stocking parts for Honda, Kawasaki and Yamaha models. The expanding lawn and garden division features trusted brands including Mountfield, Stiga, Ariens, Countax, Echo and Iseki, with servicing and repairs carried out in a purpose-built workshop. Demonstrations are available on most machinery.



Amazing us!

✨ Inspiring Our Future: Nikita Returns to William Brookes School! ✨

Year 10 had a truly inspiring visit as we welcomed back Nikita, who is now in the third year of her Level 6 Degree Apprenticeship with Jaguar Land Rover.

Nikita spoke passionately about her journey through William Brookes School and Sixth Form, sharing the support, guidance, and determination that helped her reach this incredible stage in her career.

Her message was clear: have a dream, believe in it, and go for it.

Mrs Mincher and Mrs Hennessy were absolutely beaming with pride as they watched a former student return not only with success, but with the desire to motivate the next generation.

Nikita's story is a powerful reminder to our Year 10 students that big ambitions are within reach — and that their future starts with the choices they make today and tomorrow...

✓ believe
✓ achieve
✓ succeed



Amazing us!

Spotlight on ... *Health and Social Care*



🎉 Exciting things are happening in Health & Social Care! 🎉

After half term, our Year 10 and Year 11 students will be launching their very own health campaigns! 💡👤
They've been working hard to create eye catching messages that raise awareness about the impact of flu and other common viruses on the health and wellbeing of different audiences.

Once their campaigns go live, students will step into the role of evaluators - celebrating what worked well, identifying areas to develop, and thinking about how to make their messages even more powerful in the future. 🔍🌟

We can't wait to see their creativity shine! 🌟



Matilda!

🎭✨ MATILDA JR. – TICKETS ON SALE! ✨🎭

We are excited to announce that our talented students are hard at work preparing for Matilda Jr. – The Musical!

 Performance Dates:

Tuesday 10th February – 6:30pm

 Tickets: <https://www.ticketsource.co.uk/.../2026.../18:30/t-ejaryyl>

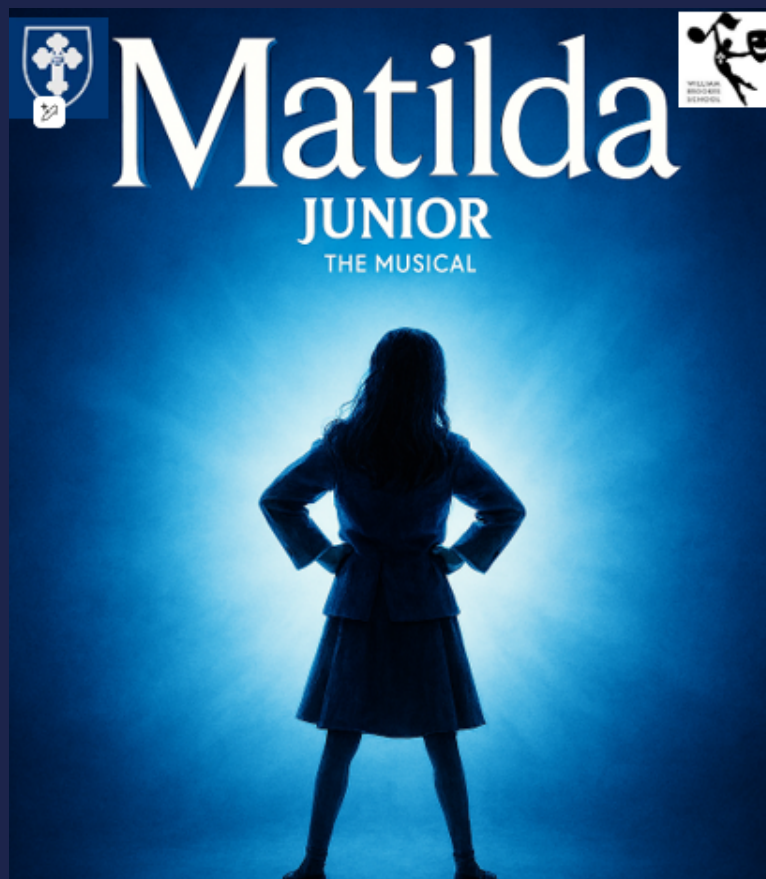
Wednesday 11th February – 6:30pm

 Tickets: <https://www.ticketsource.co.uk/.../2026.../18:30/t-jxzmddd>

Thursday 12th February – 6:30pm

 Tickets: <https://www.ticketsource.co.uk/.../2026.../18:30/t-ldnaoog>

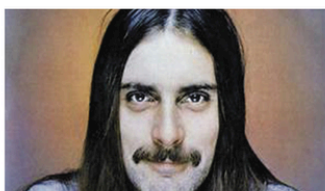
Come and support our wonderful young performers as they bring this magical story to life. Tickets tend to go quickly, so grab yours soon! ✨





What's on at The Edge

What's On at The Edge Arts Centre



An Evening with Status Quo's
John Coghlan
Friday 6 February 7.30pm
£25



Man of the World:
The Music of Peter Green
Saturday 7 February 7.30pm
Final tickets £18



Monday Night Cinema:
Hampstead (12A)
Monday 9 February 7.30pm
£6 (concessions £5)



The Rigmarollers
Joyous Blues Music
Friday 13 February 7.30pm
£15



Ria Lina
Rebellious Comedy
Saturday 14 February 7.30pm
£19



Monday Night Cinema:
Greenfingers (12A)
Monday 23 February 7.30pm
£6 (concessions £5)



The Ballad of Mulan
Live Theatre
Friday 27 February 7.30pm
£15 (concessions £7)



Jimmy Nail
Songs and Stories
Monday 26 October 7.30pm
£37.50

The Edge Arts Centre at William Brookes School

Box Office: Penny-Farthing, 5 The Square, Much Wenlock

Buy online at ticketsource.co.uk/edgeartscentre

Ticket line 0333 666 3366 during office hours

Join our mailing list at edgeartscentre.com

Careers and Destinations

Telford College

Year 11 Twilight Taster:

2nd February (5.00pm – 6.00pm)

Bookings open online

Open Event:

29th April (5.00pm – 7.30pm) –

Wellington Campus

Bookings open online

Booking can be made through the events page of the college website:

[Telford College - Events](#)

[Hereford, Ludlow & North Shropshire Open Events 2026](#)

[Kidderminster College Green Technology Centre](#)

[Shrewsbury College Events](#)

InComm Training, a provider of Engineering apprenticeships and training in Telford, has upcoming Saturday Open Days. Please see the dates and details below, and use the booking links to reserve your place.

[Open Day Dates & Locations](#)

Saturday 14th February – Aldridge

Saturday 21st February – Telford

Drop-in anytime between 10:00am and 2:00pm

Book Your Place

Aldridge: [Book Here](#)

Telford: [Book Here](#)



Advice, Guidance & Community

Kids Disabled children say we can Registered Charity No. 275936


Shropshire Autism Support Service

Understanding Behaviours Workshop

Join us online to meet other parents and gain a better understanding of behaviours that may be challenging. Learn more about how Autism, ADHD and PDA may effect behaviour and how you can put in place suitable strategies .

Details:
When: Tues 3rd February 2026
Time: 10am - 12
Where: Online

To reserve your place, email: kids.shropshire@kids.org.uk



PACC Parent Carer Council Shropshire

Community Navigator Service

Offering personalised signposting and Information Provision for families of 0-25 year old's with SEND in Shropshire

Info@paccshropshire.org.uk

We understand how difficult and overwhelming it can be to navigate your child or young persons journey. PACC's Community Navigator Service is open to any Parent Carer of a child/ young person ages 0-25 with SEND in Shropshire.

How can PACC Help?
You will be offered an initial 30-minute phone/ Teams call with a Navigator. All of PACC's Navigators are Parent Carers themselves, so have both a lived and work experience of the SEND system in Shropshire. Following the call you will receive an email with information and signposting.

What can I speak to a Navigator about?

• Social Opportunities	• Housing Options	• Education
• Finances and Benefits	• Support for Parent Carers	• Education, Health and Care Plans
• Staying Healthy	• Support for Families	• Annual Reviews
• Mental Health Support	• Employment and Volunteering	• Activity Plans
• Being Part of the local community	• Help navigating the SEND system	

How long will I wait for a call?
We try to book calls as soon as possible, usually within 72 hours of a request. Our Navigators work Monday to Friday Term-Time only.

How do I request a call?
You can either complete the linked MS form, or email us with the subject "Navigator Call"

A gentle reminder to regularly check your child's hair for head lice. This is particularly important in Year 7, as head lice can still be a common nuisance at this age. Thank you for your support in helping us manage this

- [NHS Headlice Advice](#)



Events at the Edge Arts Centre <https://edgeartscentre.com/>



Follow us on Facebook - William Brookes School



Follow us on X - @WBS_School